



LET'S TALK
FARMING

Farming Fun Book



Learning for ages 4-7



Fascinating food facts!



3 fun games



Colouring competition!

Win
prizes!



Crafty corner:
farming finger puppets



Your favourite farm animals



A day in the life of a dairy farmer

Farmer Ellie is always busy on her farm looking after her herd of cows. Trace the wiggly dotted lines with your finger to find out what she does at different times of the day.



5:00am

6:00am

8:00am

10:00am

4:00pm

6:00pm

8:00pm

9:00pm



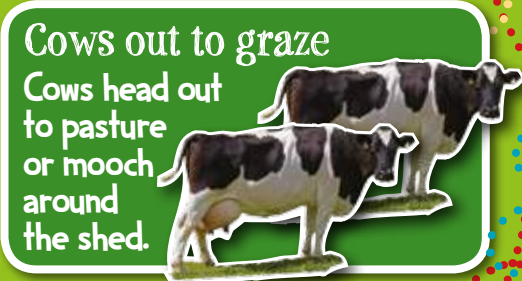
Wake-up time
Ellie starts work very early!



Afternoon milking
Ellie brings in the cows for milking again.



Milk tanker
The milk tanker arrives to take away the fresh milk to the dairy for bottling.



Cows out to graze
Cows head out to pasture or mooch around the shed.



Office work
Time for Ellie to update milk records on the computer.



Morning milking
She milks her cows in the milking parlour.

Bedtime
Ellie heads off to bed early, tired after such a busy day!



Farm chores
Ellie cleans out the milking parlour and refills the feeders.



Did you know?

Cows give us fresh milk to drink. Milk is also used to make cheese, cream, yoghurt, butter and yummy ice-cream! Draw a circle around the dairy foods that you like!



Where does our food come from?

British farmers produce all the perfect ingredients to make your favourite meals.

Draw lines to match up the foods with the right meals.



Raspberries grow on thick, thorny bushes and are in season between May and November.



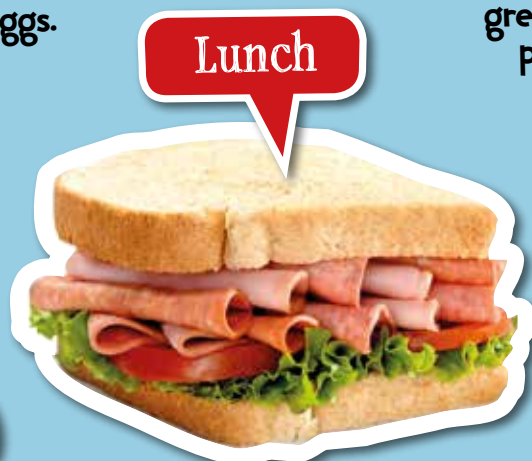
Breakfast



Pigs are reared for meat: ham, bacon and pork.



Some chickens are raised for meat, others for laying eggs.



Lunch

Sometimes tomatoes are grown in greenhouses to protect them from bad weather.



Wheat grows in big, open fields. The seeds are ground into flour to make food like bread and cereals.



Dinner

Lettuce is mostly grown outdoors and grows quickly when the weather is warm.



It's a fact!

The Red Tractor logo can be found on a wide range of quality food and drink including meat, vegetables, fruit, salads, milk, cheese, sugar and flour. The Union Flag within the logo tells us the food has come from British farms.

Red Tractor Challenge

How many food items can you spot the Red Tractor logo on in your fridge and kitchen cupboards?

The farming year

Farms are busy bustling places all year round. Here are just some of the jobs farmers do in the different seasons. Try the Tick Quiz questions to find out what you know about farming!



Spring

March April May

Harvest time for many different fruit and vegetables including asparagus, spring onions and new potatoes



Baby lambs are born



Animals are moved to the fields and graze the grass

Where do apples and pears grow?

- in orchards
- in greenhouses
- in fields

Land is ploughed and prepared and the seeds of spring crops are sown into the fields

Harvest time for many different fruit and vegetables including apples, pears, pumpkins and butternut squash



Autumn

September October November

When it gets too cold, some cattle and sheep are moved indoors for the winter



Which of these crops is not a root vegetable?

- carrots
- beans
- parsnips

Female sheep (ewes) and male sheep (rams) are put together to produce springtime lambs



Land is ploughed and prepared and the seeds of winter crops are sown into the fields

Summer

June July August

The farmer makes hay from grass so he can feed it to the animals in winter



Sheep are given a haircut, called shearing, and their wool is sent to market



Harvest time for many different fruit and vegetables including strawberries, raspberries, peas, lettuces and courgettes

What's a female chicken called?

- cockerel
- chick
- hen

How is wheat harvested?

- by hand
- by tractor
- by combine harvester

A combine harvester is used to harvest crops planted last winter and this spring such as wheat and barley



Animals eat the food the farmer made earlier in the year, like hay, as well as special animal feed to keep them healthy



Harvest time for many different fruit and vegetables including leeks, brussels sprouts, turnips and parsnips

Winter

December January February

What's the name for a group of sheep?

- pack
- flock
- team

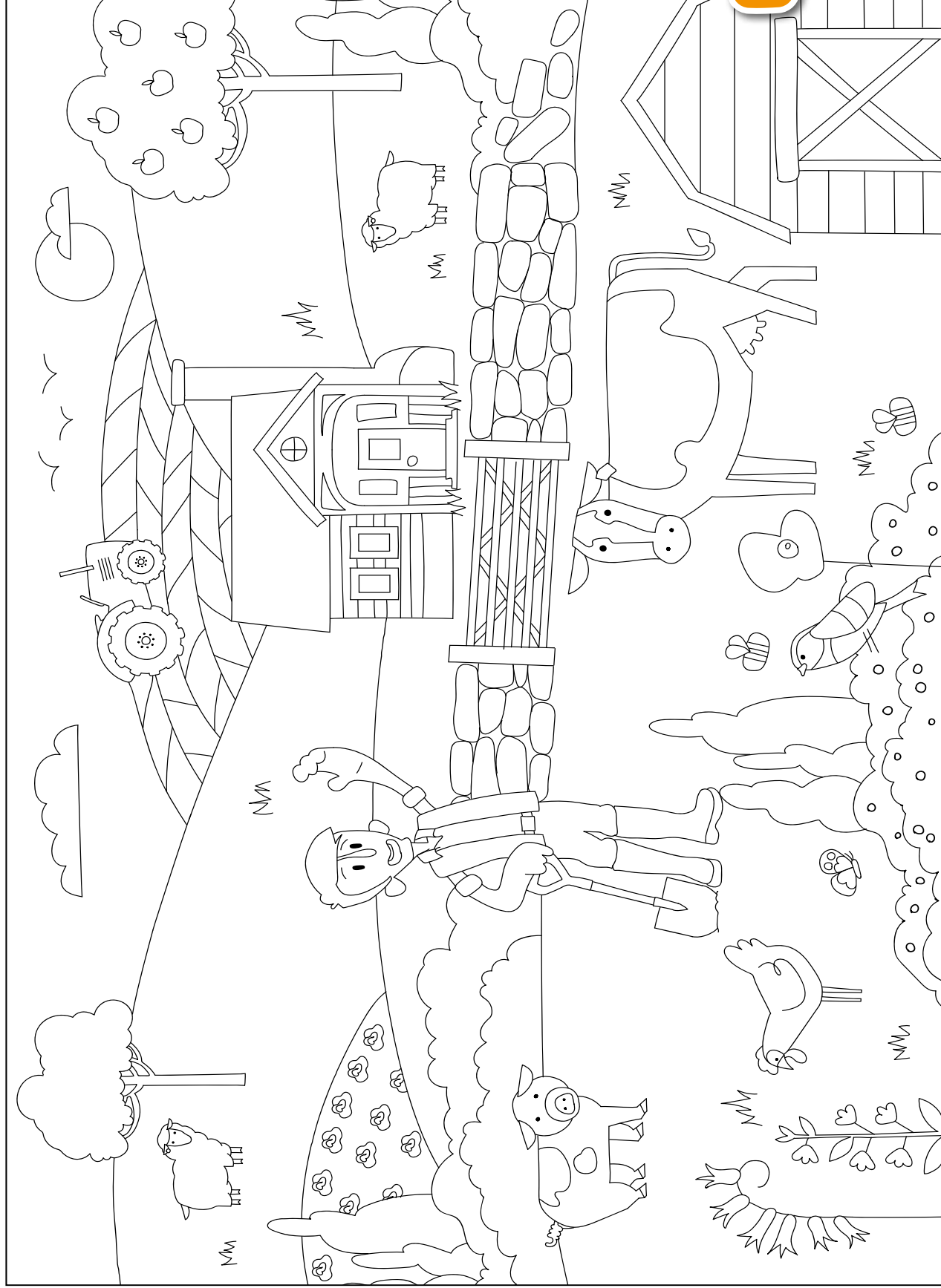
Time to do any repairs to buildings, animal pens and fences around the farm



Many fruit and vegetables are sown and harvested throughout the year using tractors and special farm machines.

What are your favourite things to eat in each of the four seasons?

Farmyard colouring fun Colour me!



Get colouring with this picture of a busy farm scene. Try doodling in Farmer Ben's sheepdog and more animals in the fields. How many animals are in your finished picture?

Prize draw

Send us a photo of your finished artwork together with your name and age for a chance to be a winner in our prize draw!

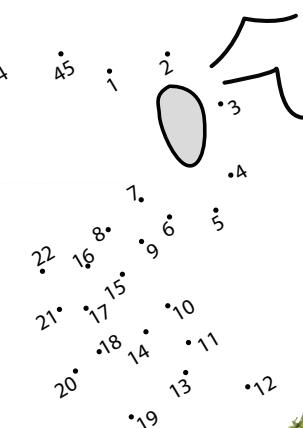
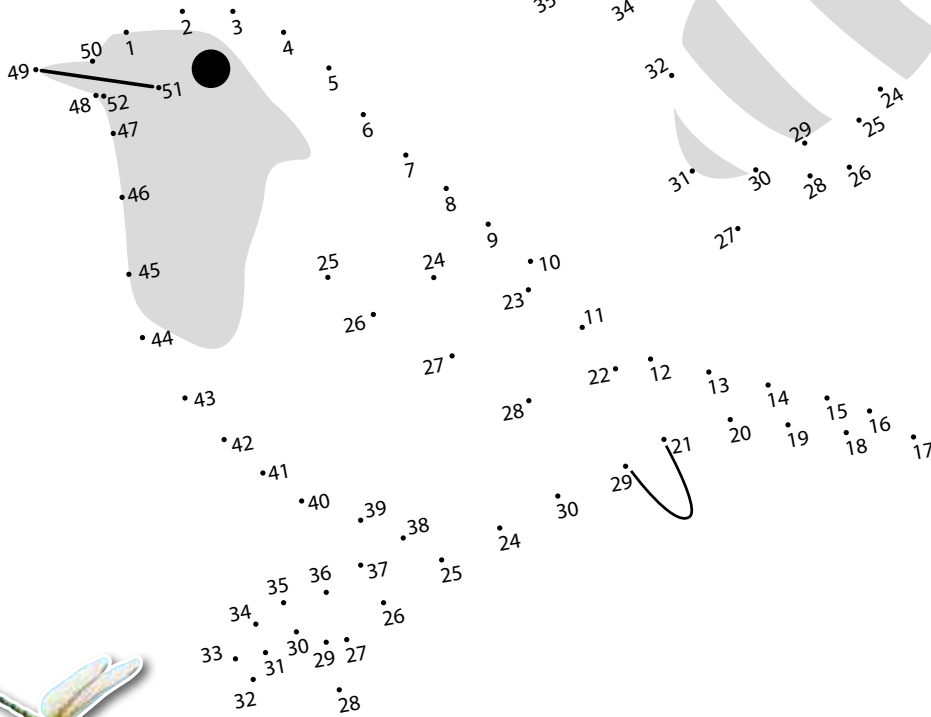
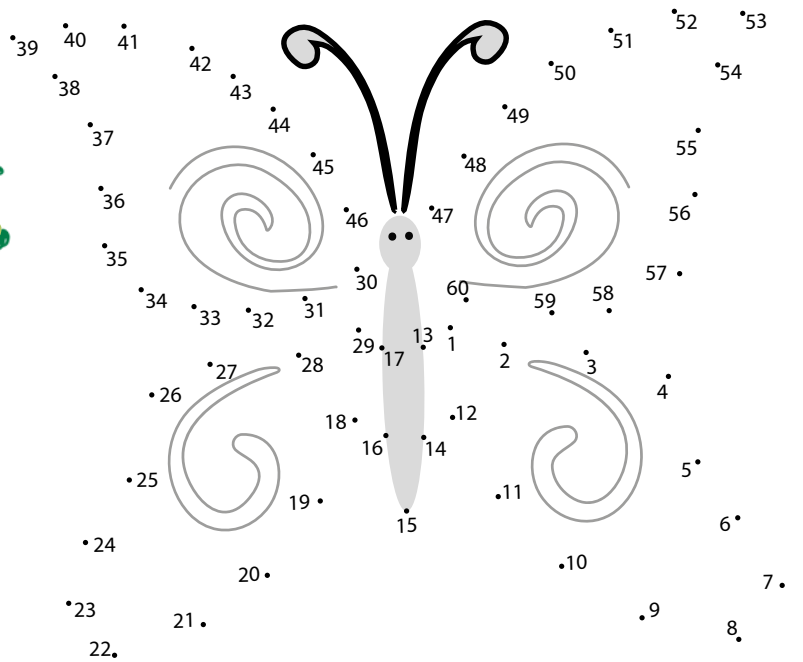
letstalkfarming@
nfu.org.uk

Full terms and conditions:
letstalkfarming.co.uk

Countryside wildlife dot-to-dot

It's not just farm animals that live on Britain's farms. They're home to lots of wildlife too. You can also spot animals and insects like birds, hedgehogs, otters, butterflies and beetles.

Join the dots to discover the wildlife hiding in this farm hedgerow. Decorate your creatures with lively spots, stripes and patterns!



Finger puppet mini farm

Cut out
and keep!

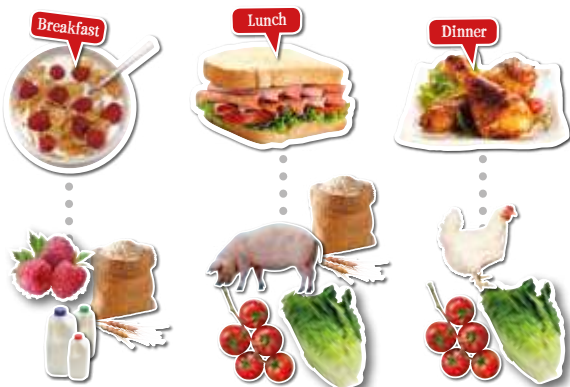
Ask an adult to help you cut out the puppets.
Tape the band ends into rings to fit on your fingers.

Cut out and make your own set of mini farm animal finger puppets. Pop them on your fingers and put on a show! Can you tell a farm story to family and friends?

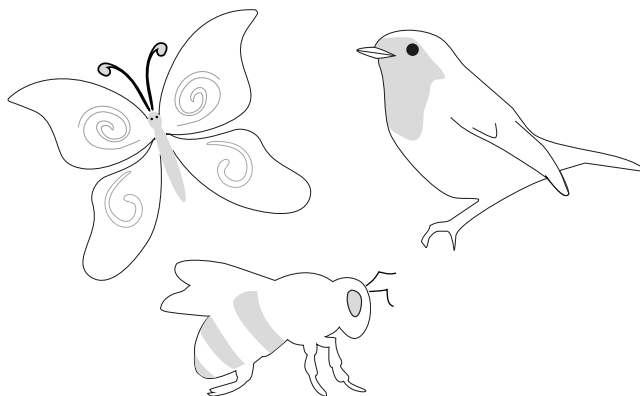


How did you do?

Answers for page 3



Wildlife dot-to-dot page 7



Quiz answers page 5:

Where do apples and pears grow?

in orchards

Which of these crops is not a root vegetable?

beans

How is wheat harvested?

by combine harvester

What's a female chicken called?

hen

What's the name for a group of sheep?

flock



For more about British farming and details of our roadshow, visit www.letstalkfarming.co.uk