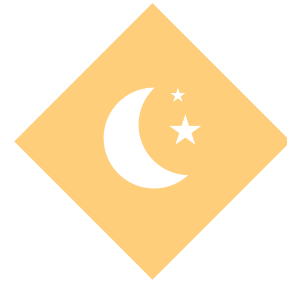




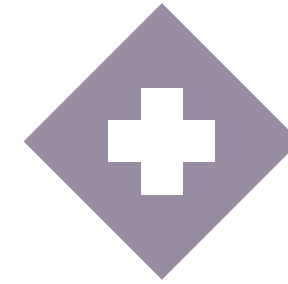
Pick up dead and remove to secure storage promptly and without delay



Do not have a temporary overnight storage – dead/culled birds left in the control room overnight must be avoided



Ensure that dead bins are locked and located well away from the birds



Birds that have leg health issues should be culled promptly and humanely



All sheds doors including catching doors should be kept locked even when the manager is on site



Don't leave the site until you have resolved any issue you wouldn't want to see in the press the following day



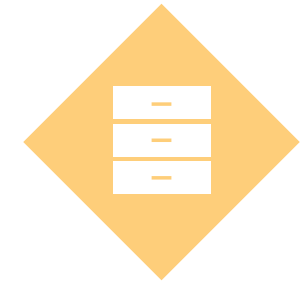
Treat drugs for what they are – drugs – and keep them clean, cool and secure



Never leave medicines or vaccines on display



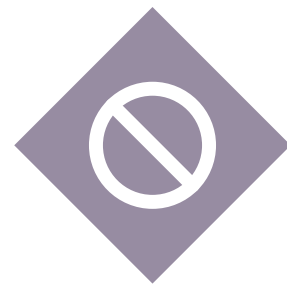
Lock away all paperwork and safely dispose of old paperwork and out-of-date certificates



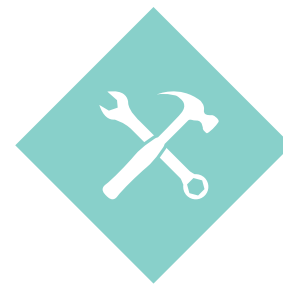
Everything has a home – put it back at the end of the day so that it is easy to find tomorrow



Spilt feed is unprofitable and a hazard – clean it up before the wild birds (AI risk) and vermin (salmonella risk) do



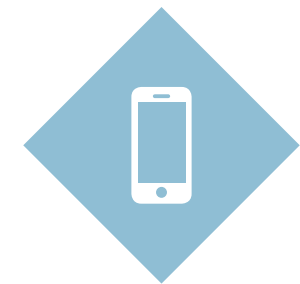
Remember – anything that doesn't look right, isn't right



Get onto maintenance early before a routine job becomes a crisis – a leaking nipple on a drinker line will only get worse not better



Act at all times as if the farm assurance auditor or a member of the public is coming round today



Ring police without delay if you spot anything suspicious or suspect you have had a break-in, and join a Farm Watch scheme in your area