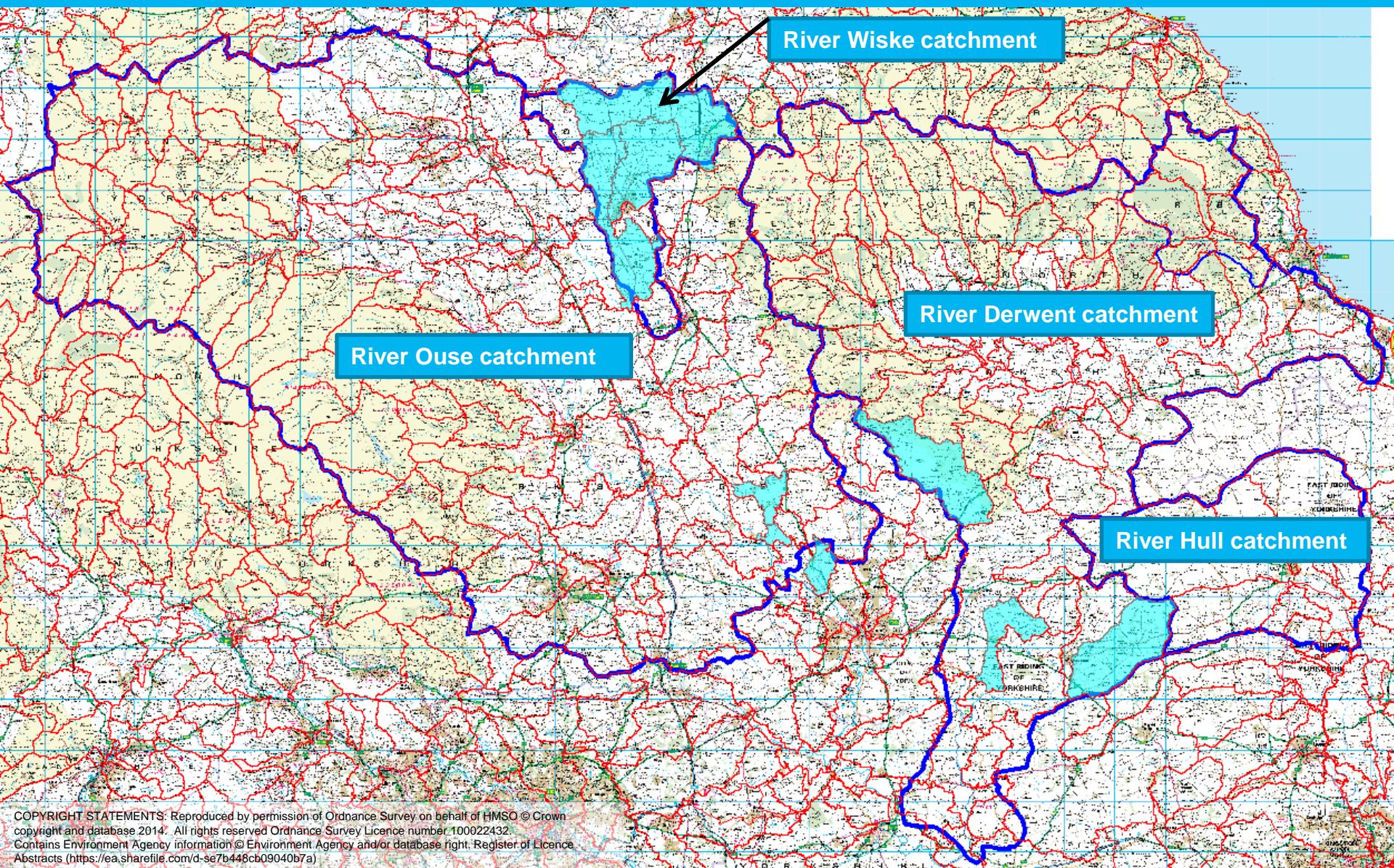


# Drinking Water Catchments – Metaldehyde High Risk Sub-catchments

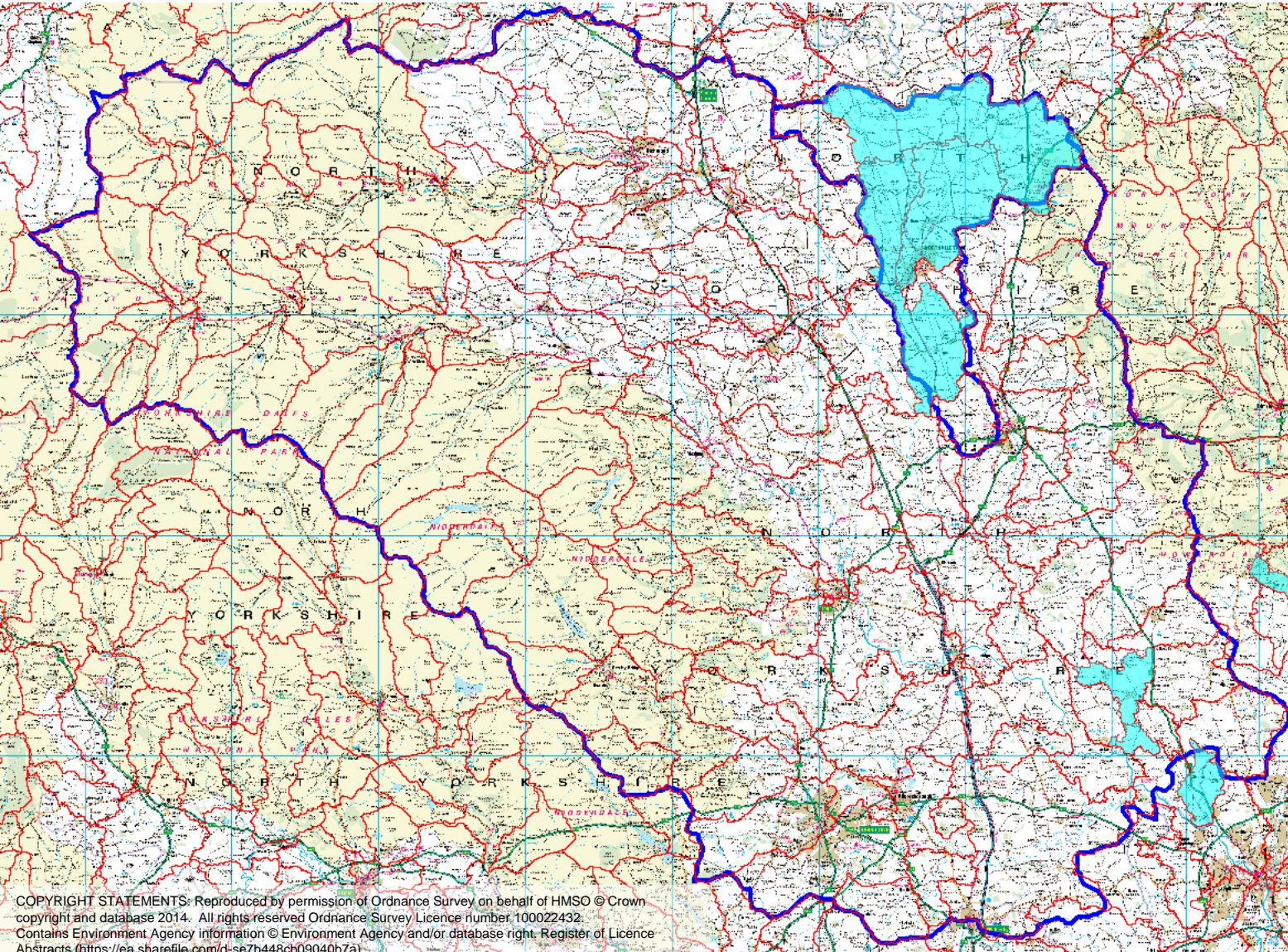
Including:  
River Wiske tributaries  
Hurns Gutter catchment  
River Kyle catchment  
Braisthwaite Beck  
Blackfoss Beck  
Bielby Beck



# Drinking Water Catchments – High risk sub-catchments shown in light blue



# River Ouse Catchment



High risk  
sub-  
catchments  
highlighted  
in blue.



# Hurns Gutter from Source to River Ouse



**Hurns Gutter at Overton:**  
Max = 13.20ug/l  
Avg = 0.618ug/l  
Min = 0.006ug/l

A19

Shipton

Skelton

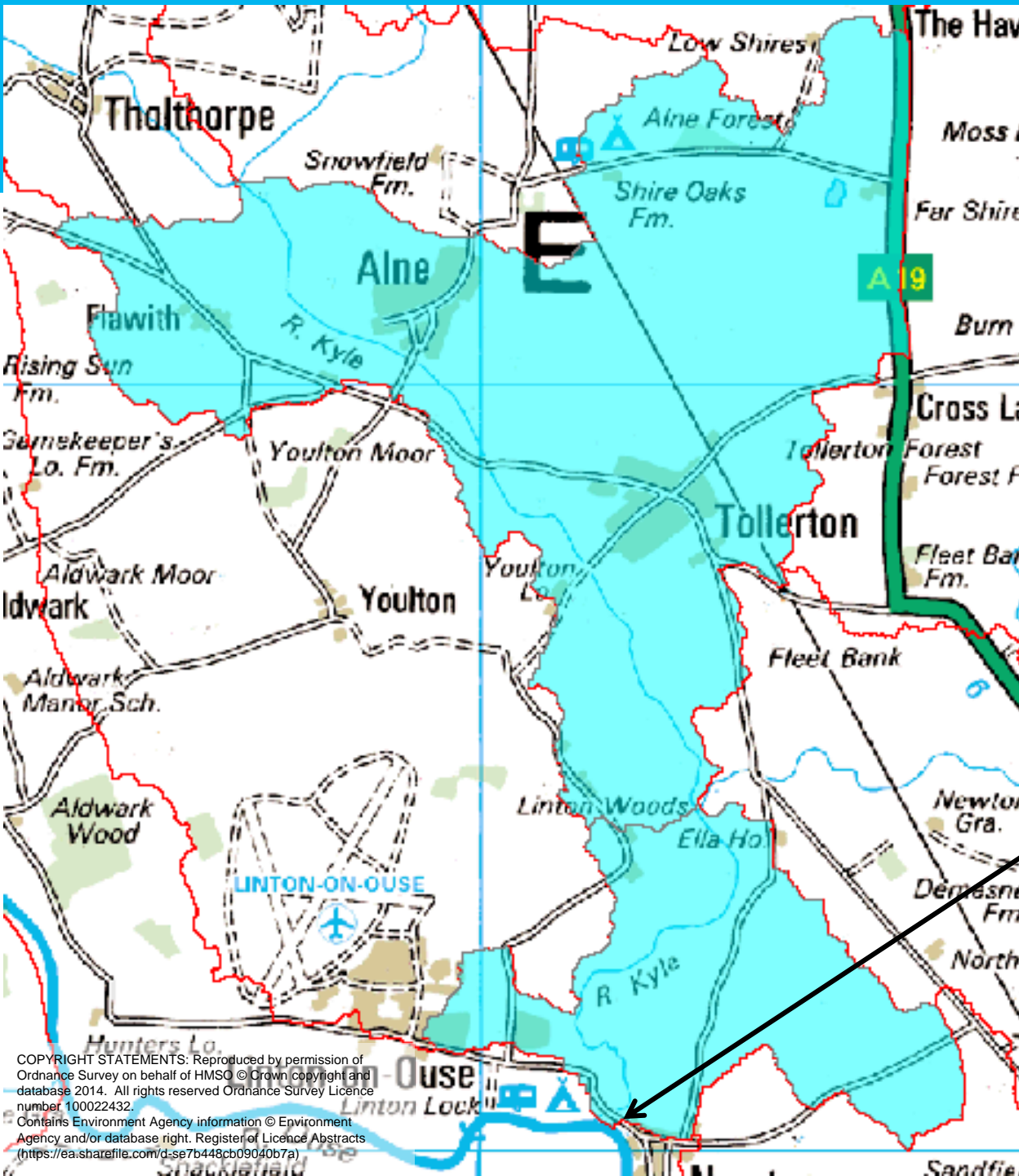
Overton

SKIPTON

COPYRIGHT STATEMENTS: Reproduced by permission of Ordnance Survey on behalf of HMSO © Crown copyright and database 2014. All rights reserved Ordnance Survey Licence number 100022432. Contains Environment Agency information © Environment Agency and/or database right. Register of Licence Abstracts (<https://ea.sharefile.com/d-se7b448cb09040b7a>)



# River Kyle to River Ouse

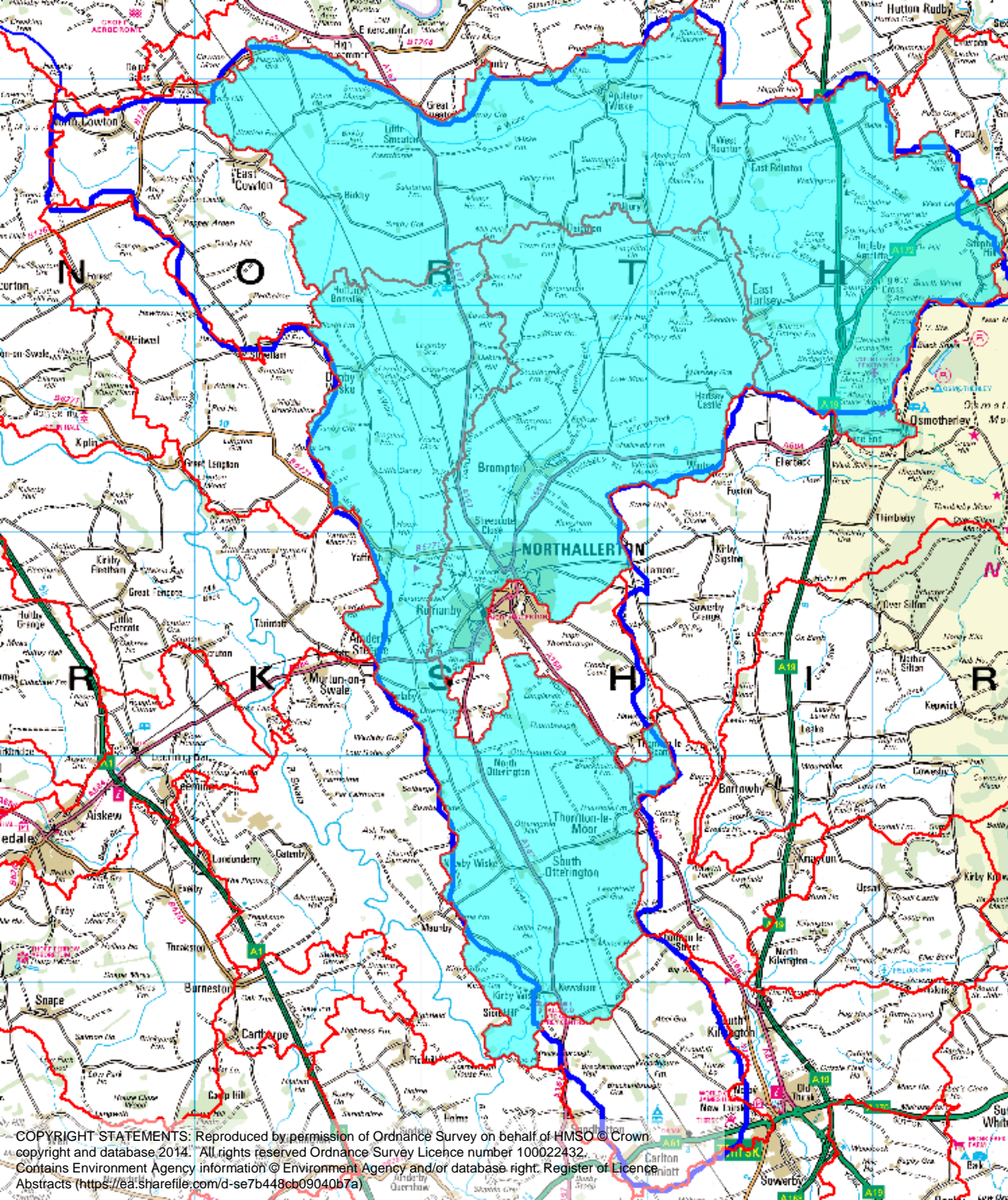


River Kyle at  
Newton:  
Max = 0.986ug/l  
Avg = 0.114ug/l  
Min = 0.005ug/l

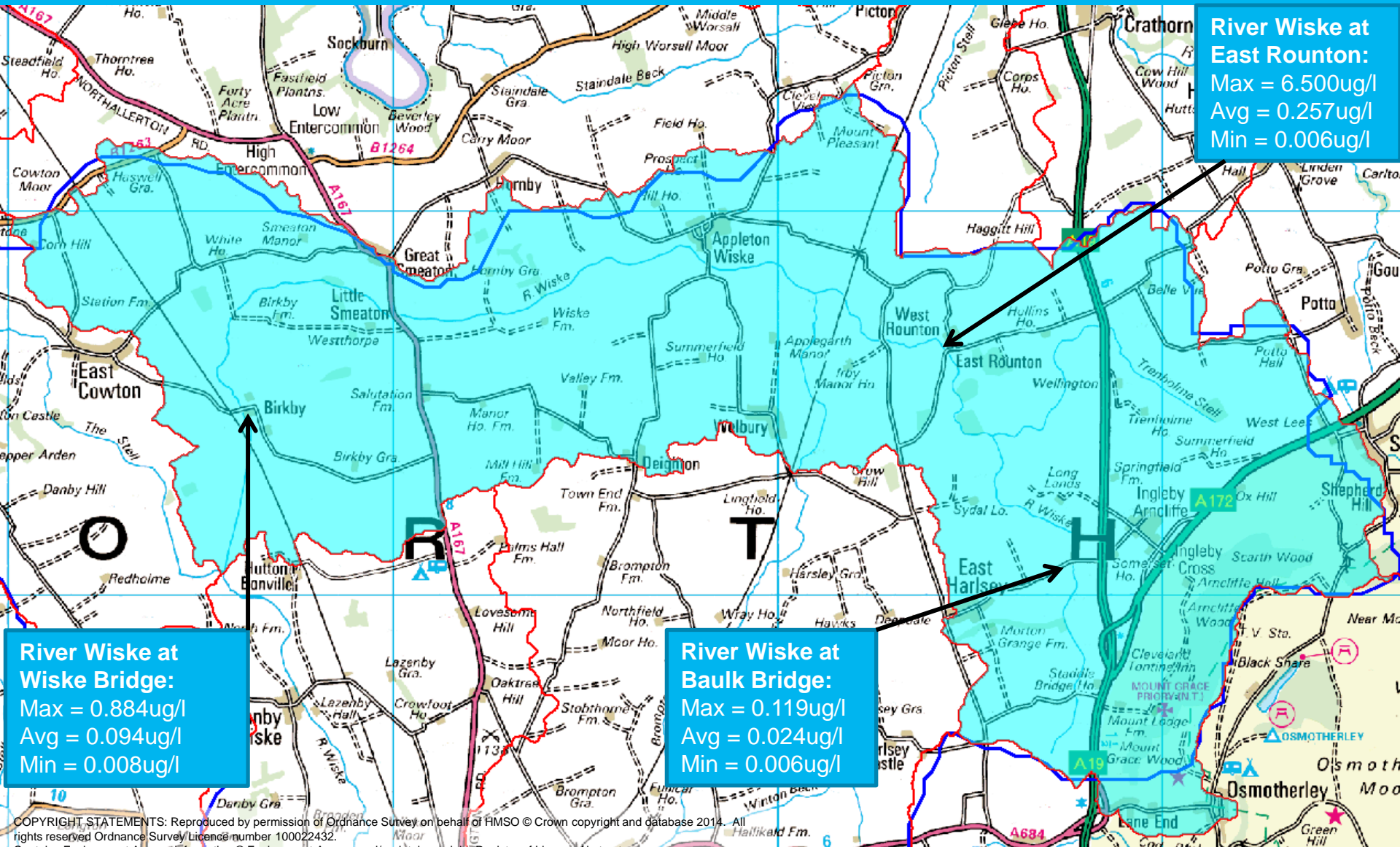


# River Wiske Catchment

River Wiske catchment with high risk sub-catchments highlighted in blue.



# River Wiske from Source to Trenholme Stell

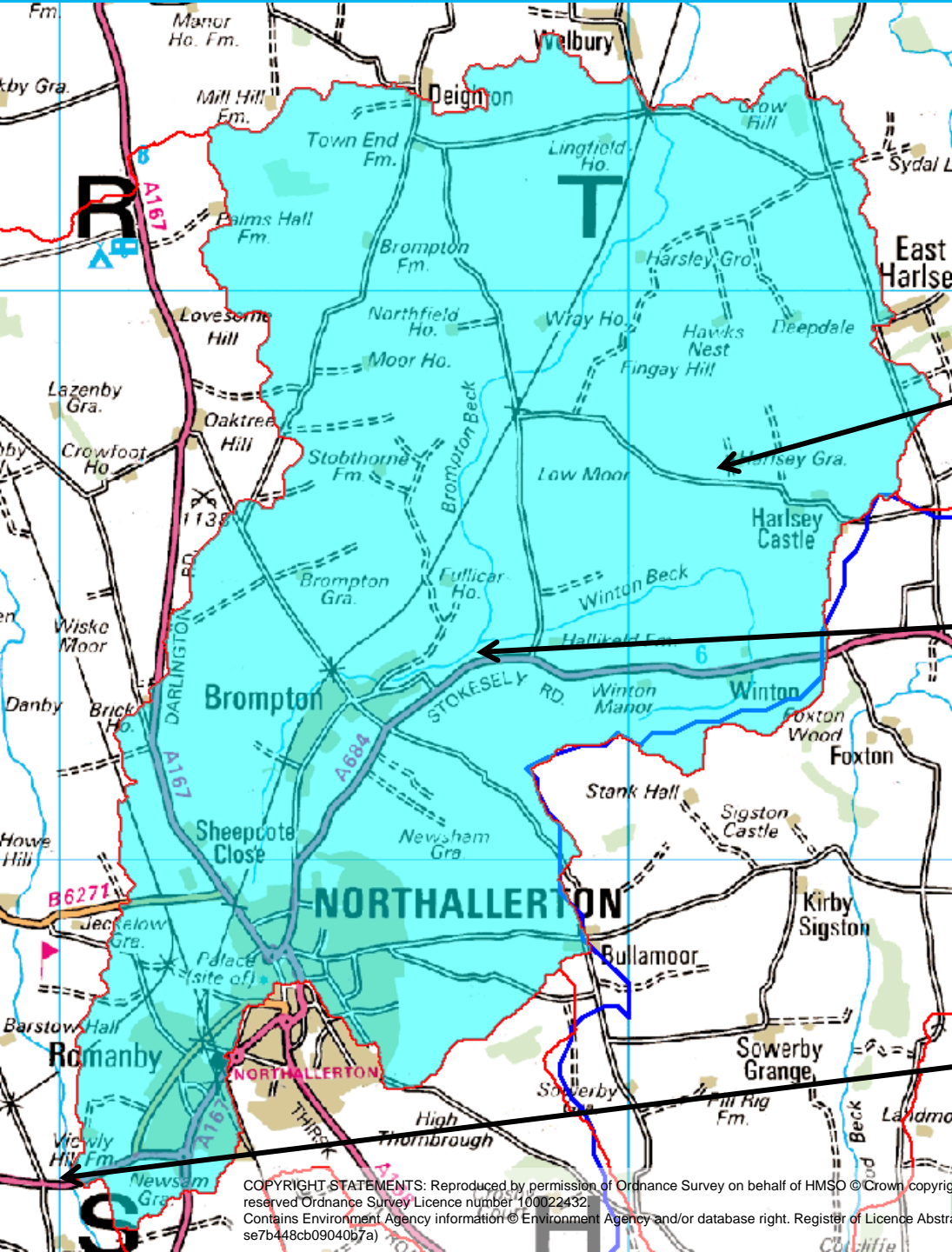


**River Wiske at East Rounton:**  
Max = 6.500ug/l  
Avg = 0.257ug/l  
Min = 0.006ug/l

**River Wiske at Wiske Bridge:**  
Max = 0.884ug/l  
Avg = 0.094ug/l  
Min = 0.008ug/l

**River Wiske at Baulk Bridge:**  
Max = 0.119ug/l  
Avg = 0.024ug/l  
Min = 0.006ug/l

# Will Beck Catchment (Tributary of River Wiske)



**Harsley Beck:**  
Max = 3.980ug/l  
Avg = 0.176ug/l  
Min = 0.006ug/l

**Brompton Beck:**  
Max = 3.550ug/l  
Avg = 0.162ug/l  
Min = 0.006ug/l

**River Wiske at Romanby:**  
Max = 0.854ug/l  
Avg = 0.095ug/l  
Min = 0.006ug/l





# River Wiske from Trenholme Stell to River Swale

**River Wiske at  
Danby Wiske:**  
Max = 2.286ug/l  
Avg = 0.214ug/l  
Min = 0.013ug/l

**River Wiske at  
Viewly Bridge:**  
Max = 0.854ug/l  
Avg = 0.095ug/l  
Min = 0.006ug/l

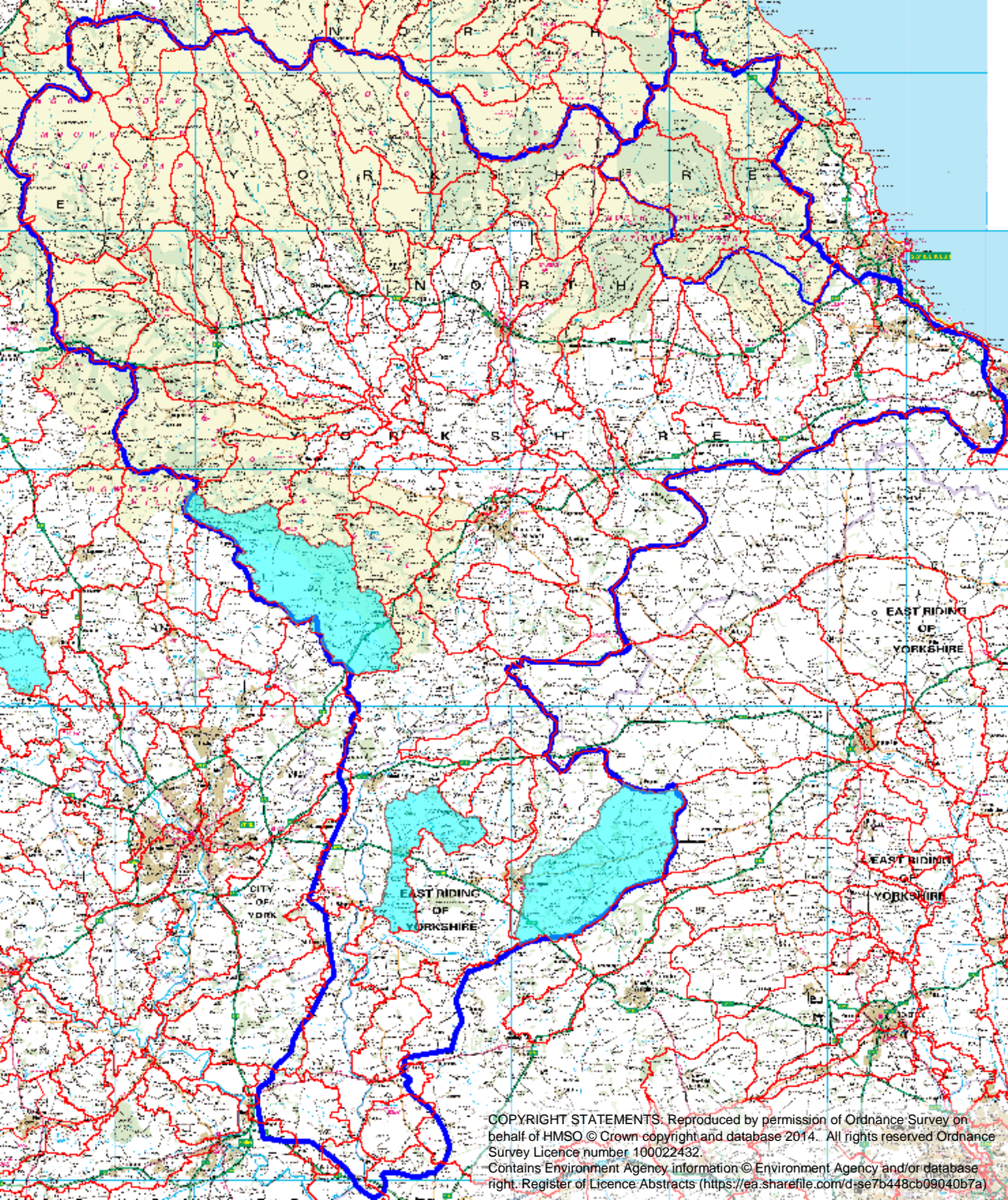
**River Wiske at  
Kirby Wiske:**  
Max = 1.450ug/l  
Avg = 0.142ug/l  
Min = 0.008ug/l

COPYRIGHT STATEMENTS:  
Reproduced by permission of Ordnance  
Survey on behalf of HMSO © Crown  
copyright and database 2014. All rights  
reserved Ordnance Survey Licence  
number 100022432.  
Contains Environment Agency  
information © Environment Agency  
and/or database right, Register of  
Licence Abstracts  
(<https://ea.sharefile.com/dse7b448cb09040b7a>)



# River Derwent Catchment

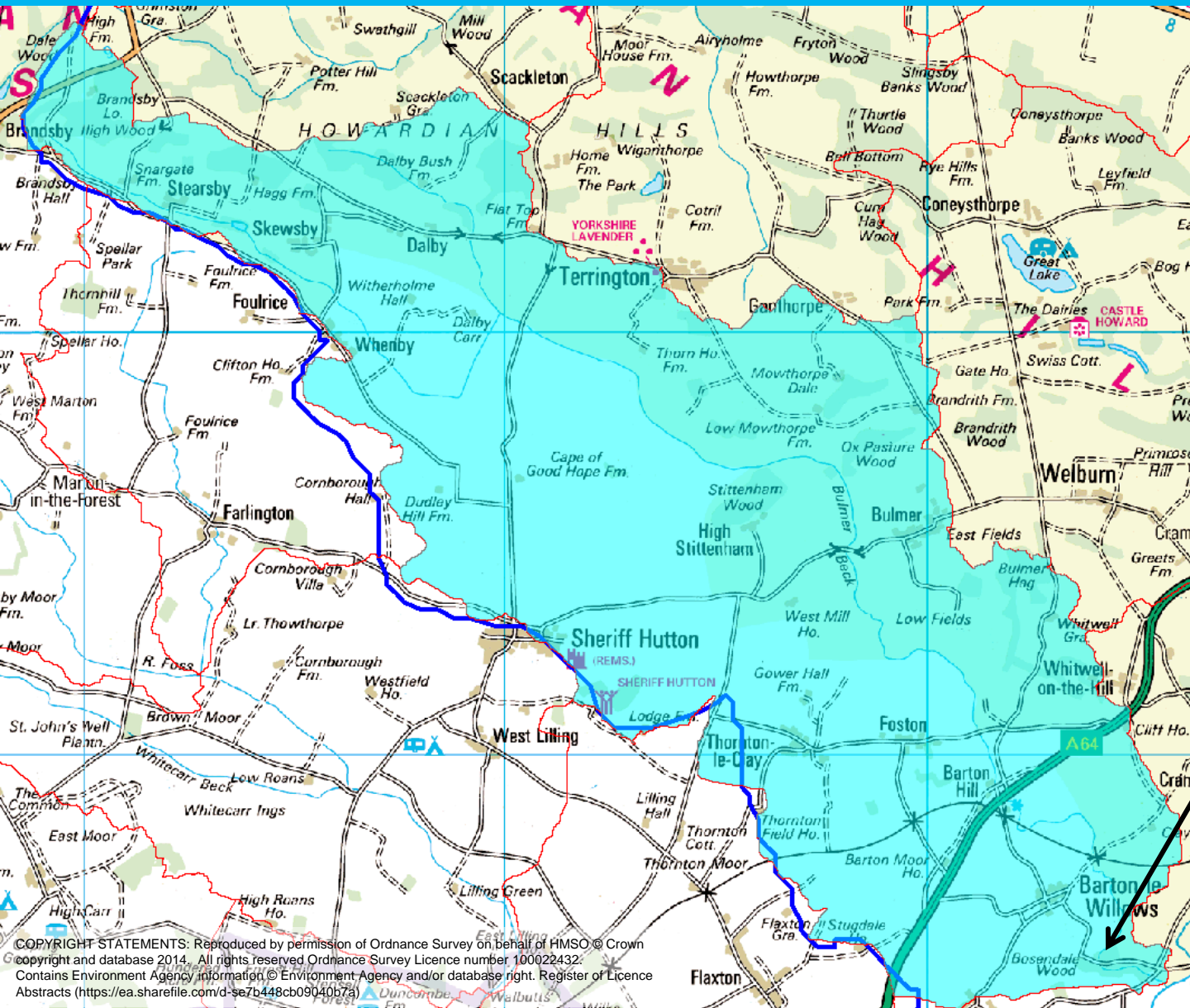
River Derwent  
catchment with high  
risk sub-catchments  
highlighted in blue.



COPYRIGHT STATEMENTS: Reproduced by permission of Ordnance Survey on behalf of HMSO © Crown copyright and database 2014. All rights reserved Ordnance Survey Licence number 100022432.  
Contains Environment Agency information © Environment Agency and/or database right. Register of Licence Abstracts (<https://ea.sharefile.com/d:se7b448cb09040b7a>)



# Spittle/Bulmer/Ings Becks catchment (Tributary of River Derwent)



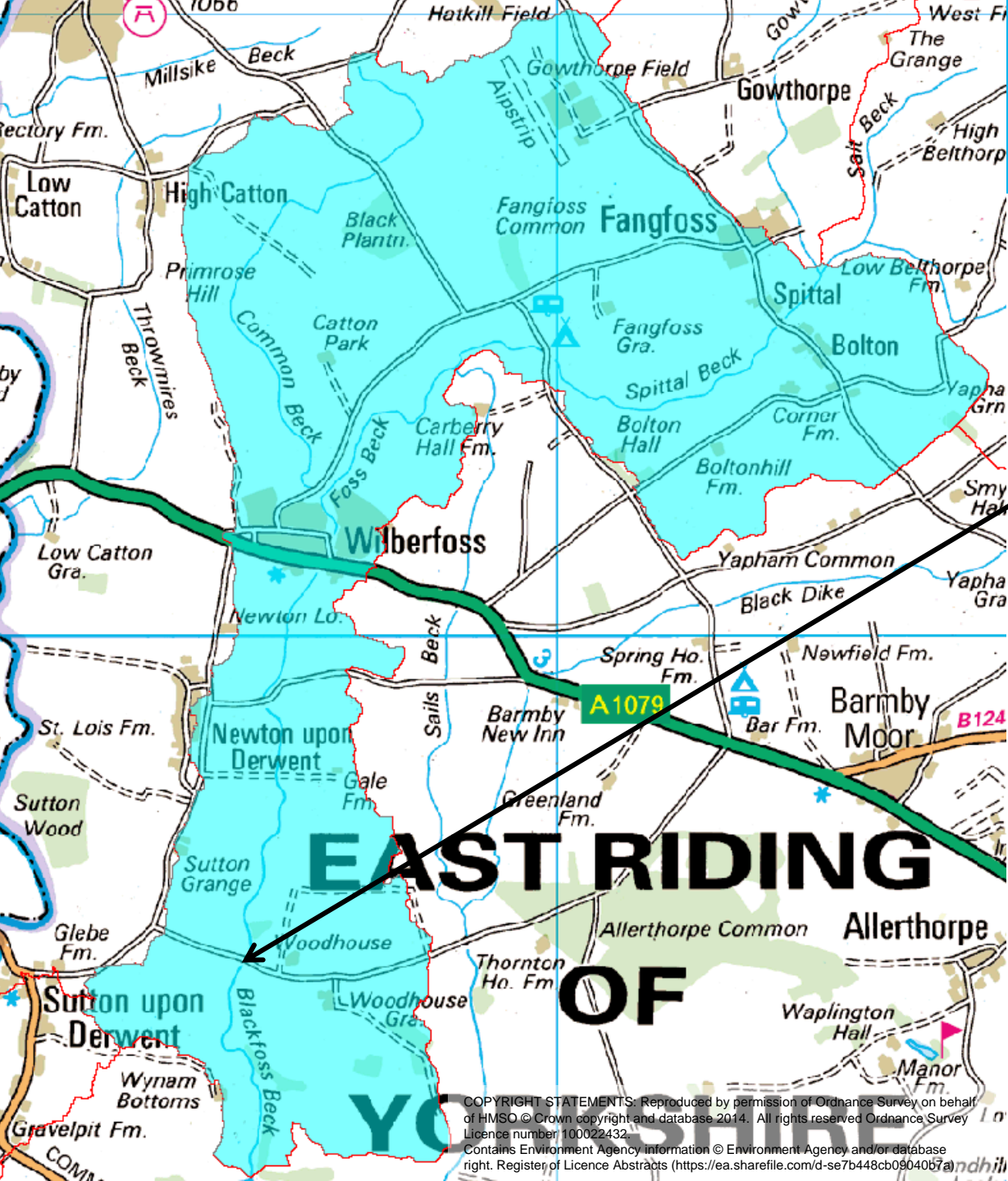
**Braithwaite Beck:**  
Max = 2.380ug/l  
Avg = 0.160ug/l  
Min = 0.008ug/l



COPYRIGHT STATEMENTS: Reproduced by permission of Ordnance Survey on behalf of HMSO © Crown copyright and database 2014. All rights reserved. Ordnance Survey Licence number 100022432. Contains Environment Agency information © Environment Agency and/or database right. Register of Licence Abstracts (<https://ea.sharefile.com/d-se7b448cb09040b7a>)

# Blackfoss Beck Lower Catchment

**Blackfoss Beck:**  
Max = 2.060ug/l  
Avg = 0.122ug/l  
Min = 0.004ug/l



COPYRIGHT STATEMENTS: Reproduced by permission of Ordnance Survey on behalf of HMSO © Crown copyright and database 2014. All rights reserved Ordnance Survey Licence number 100022432.  
Contains Environment Agency information © Environment Agency and/or database right. Register of Licence Abstracts (<https://ea.sharefile.com/d-se7b448cb0904057a>)



